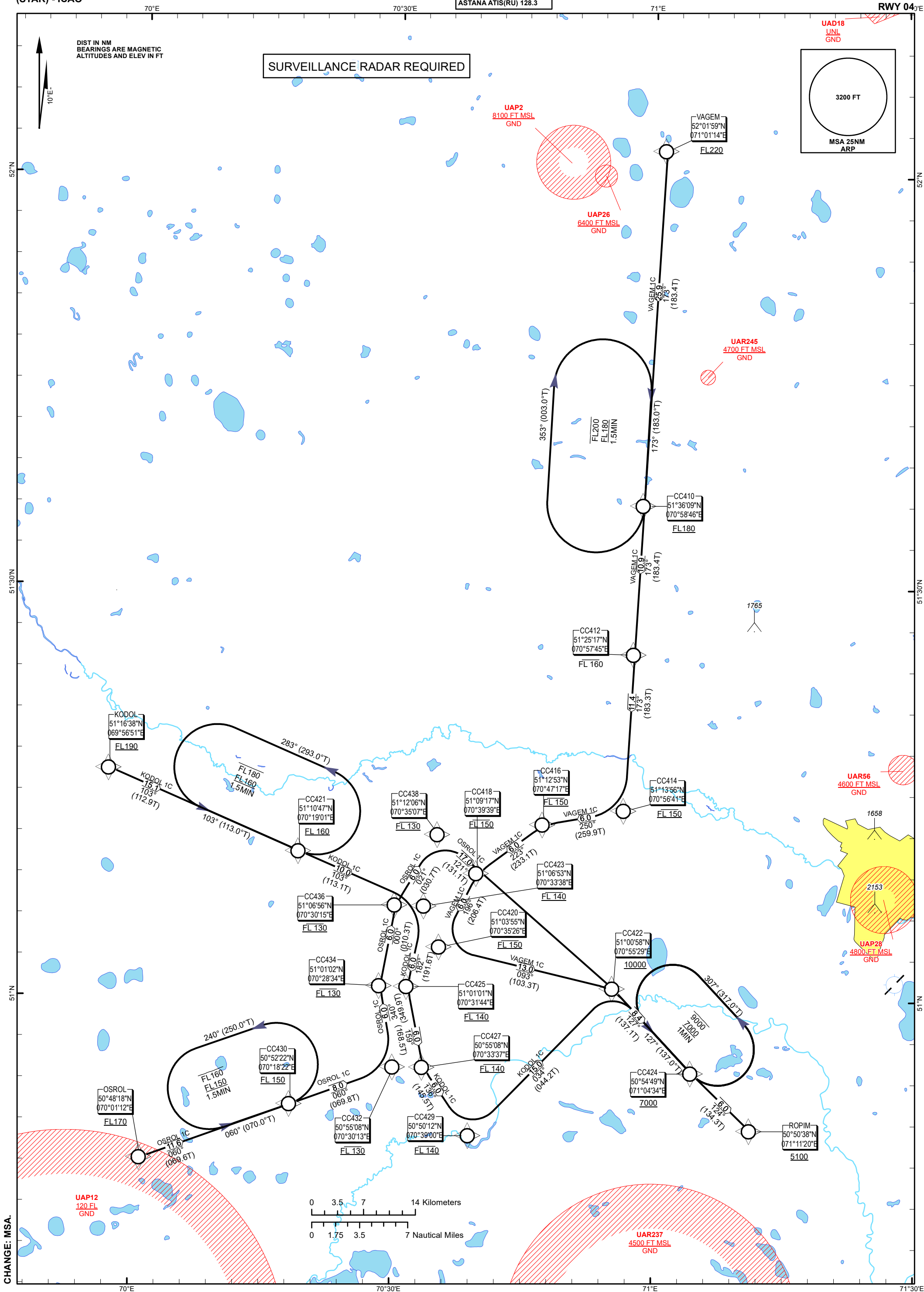


TRANSITION ALT
10000 FT

ASTANA TOWER 135.5
ASTANA APPROACH 124.6
ASTANA RADAR 120.7
ASTANA ATIS(EN) 129.5
ASTANA ATIS(RU) 128.3

(RNAV 1 STAR BASED ON GNSS)
KODOL 1C, OSROL 1C, VAGEM 1C

**ASTANA
NURSULTAN NAZARBAYEV
INTERNATIONAL AIRPORT
RWY 04^{0'E}**



TABULAR DESCRIPTION

KODOL 1C RWY04											
Serial Number	Path Descriptor	Waypoint Identifier	Fly - over	Course °M(°T)	Magnetic Variation(°)	Distance NM	Turn Direction	Altitude FT	Speed KT	VPA (°)	Navigation Specification
10	IF	KODOL	-		10	0	-	+FL190	-315	-	RNAV1
20	TF	CC421	-	103(112.9)	10	15.1	-	+FL160	-280	-	RNAV1
30	TF	CC423	-	103(113.1)	10	10	-	@FL140	-280	-	RNAV1
40	TF	CC425	-	182(191.6)	10	6	R	@FL140	-280	-	RNAV1
50	TF	CC427	-	159(168.5)	10	6	L	@FL140	-280	-	RNAV1
60	TF	CC429	-	136(145.5)	10	6	L	@FL140	-280	-	RNAV1
70	TF	CC422	-	34(44.2)	10	15	L	+10000	-250	-	RNAV1
80	TF	CC424	-	127(137.1)	10	8.4	R	+7000	-250	-	RNAV1
90	TF	ROPIM	-	124(134.3)	10	6	L	+5100	-230	-	RNAV1

WAYPOINT LIST

KODOL 1C		
Waypoint Identifier	Coordinates	
KODOL	511638.00N	0695651.00E
CC421	511047.16N	0701901.37E
CC423	510652.79N	0703338.28E
CC425	510100.51N	0703143.85E
CC427	505508.15N	0703337.44E
CC429	505011.92N	0703859.64E
CC422	510057.81N	0705529.01E
CC424	505448.62N	0710433.59E
ROPIM	505037.85N	0711120.41E

TABULAR DESCRIPTION

OSROL 1C RWY04											
Serial Number	Path Descriptor	Waypoint Identifier	Fly - over	Course °M(°T)	Magnetic Variation(°)	Distance NM	Turn Direction	Altitude FT	Speed KT	VPA (°)	Navigation Specification
10	IF	OSROL	-		10	0	-	+FL170	-315	-	RNAV1
20	TF	CC430	-	60(69.6)	10	11.6	-	+FL150	-280	-2.3	RNAV1
30	TF	CC432	-	60(69.8)	10	8	-	@FL130	-280	-2.3	RNAV1
40	TF	CC434	-	340(349.9)	10	6	L	@FL130	-280	-	RNAV1
50	TF	CC436	-	0(10.3)	10	6	R	@FL130	-280	-	RNAV1
60	TF	CC438	-	21(30.7)	10	6	R	@FL130	-280	-	RNAV1
70	TF	CC422	-	121(131.1)	10	17	R	+10000	-250	-1.5	RNAV1
80	TF	CC424	-	127(137.1)	10	8.4	R	+7000	-250	-2.2	RNAV1
90	TF	ROPIM	-	124(134.3)	10	6	L	+5100	-230	-1.5	RNAV1

WAYPOINT LIST

OSROL 1C		
Waypoint Identifier	Coordinates	
OSROL	504818.00N	0700112.00E
CC430	505221.86N	0701822.45E
CC432	505508.25N	0703013.46E
CC434	510102.29N	0702833.83E
CC436	510656.13N	0703015.40E
CC438	511205.55N	0703506.68E
CC422	510057.81N	0705529.01E
CC424	505448.62N	0710433.59E
ROPIM	505037.85N	0711120.41E

TABULAR DESCRIPTION

VAGEM 1C RWY04											
Serial Number	Path Descriptor	Waypoint Identifier	Fly - over	Course °M(°T)	Magnetic Variation(°)	Distance NM	Turn Direction	Altitude FT	Speed KT	VPA (°)	Navigation Specification
10	IF	VAGEM	-		10	0	-	+FL220	-315	-	RNAV1
20	TF	CC410	-	173(183.4)	10	25.9	-	+FL180	-280	-	RNAV1
30	TF	CC412	-	173(183.4)	10	10.9	-	-FL160	-280	-	RNAV1
40	TF	CC414	-	173(183.3)	10	11.4	-	@FL150	-280	-	RNAV1
50	TF	CC416	-	250(259.9)	10	6	R	@FL150	-280	-	RNAV1
60	TF	CC418	-	223(233.1)	10	6	L	@FL150	-280	-	RNAV1
70	TF	CC420	-	196(206.4)	10	6	L	@FL150	-280	-	RNAV1
80	TF	CC422	-	93(103.3)	10	13	L	+10000	-250	-	RNAV1
90	TF	CC424	-	127(137.1)	10	8.4	R	+7000	-250	-	RNAV1
100	TF	ROPIM	-	124(134.3)	10	6	L	+5100	-230	-	RNAV1

WAYPOINT LIST

VAGEM 1C		
Waypoint Identifier	Coordinates	
VAGEM	520159.00N	0710114.00E
CC410	513608.50N	0705845.92E
CC412	512517.29N	0705744.56E
CC414	511355.58N	0705641.01E
CC416	511252.76N	0704717.20E
CC418	510917.08N	0703939.41E
CC420	510354.95N	0703525.59E
CC422	510057.81N	0705529.01E
CC424	505448.62N	0710433.59E
ROPIM	505037.85N	0711120.41E

CHANGE: Editorial.